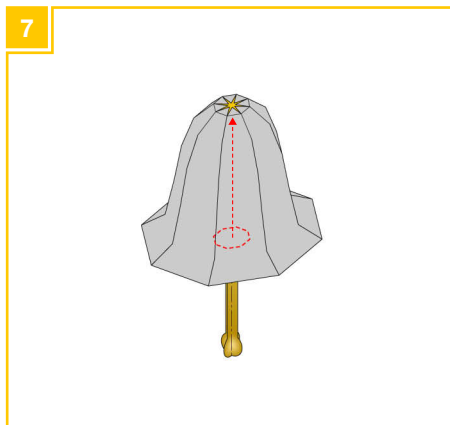
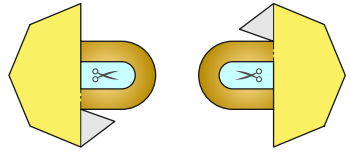
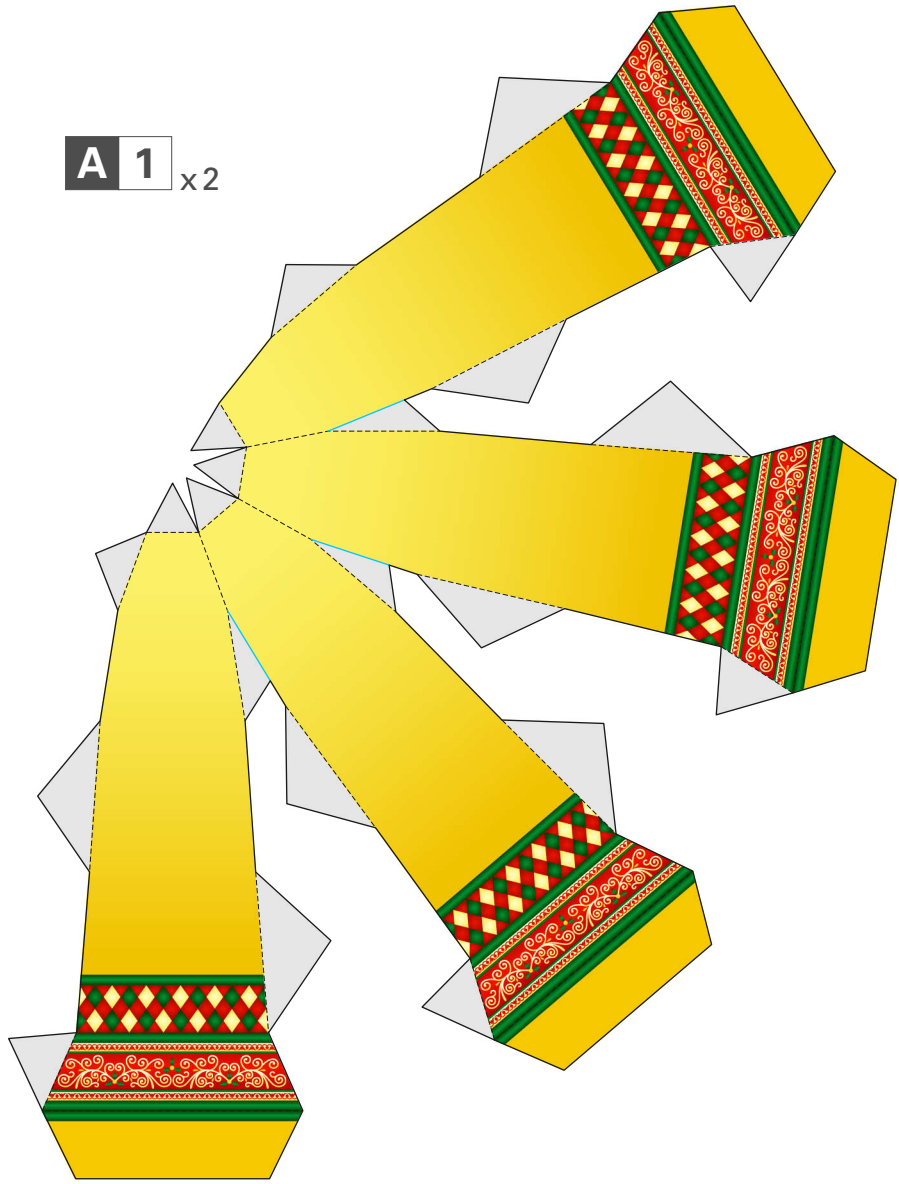


Instructions	Pattern: 4 sheets	Number of Parts: 22
<p>----- Mountain fold --- Valley fold</p> <p>— Scissors line — Cut in line</p> <p>✂ Cut out ■ Glue spot</p>	<p>You will need: Scissors, glue, a ruler, a used ball-point pen</p> <p>Assembly tip: Trace along the folds with a ruler and a used pen(no-ink) to get a sharper, easier fold.</p>	
<p>Caution: Glue, scissors and other tools may be dangerous to young children so be sure to keep them out of the reach of young children.</p>		

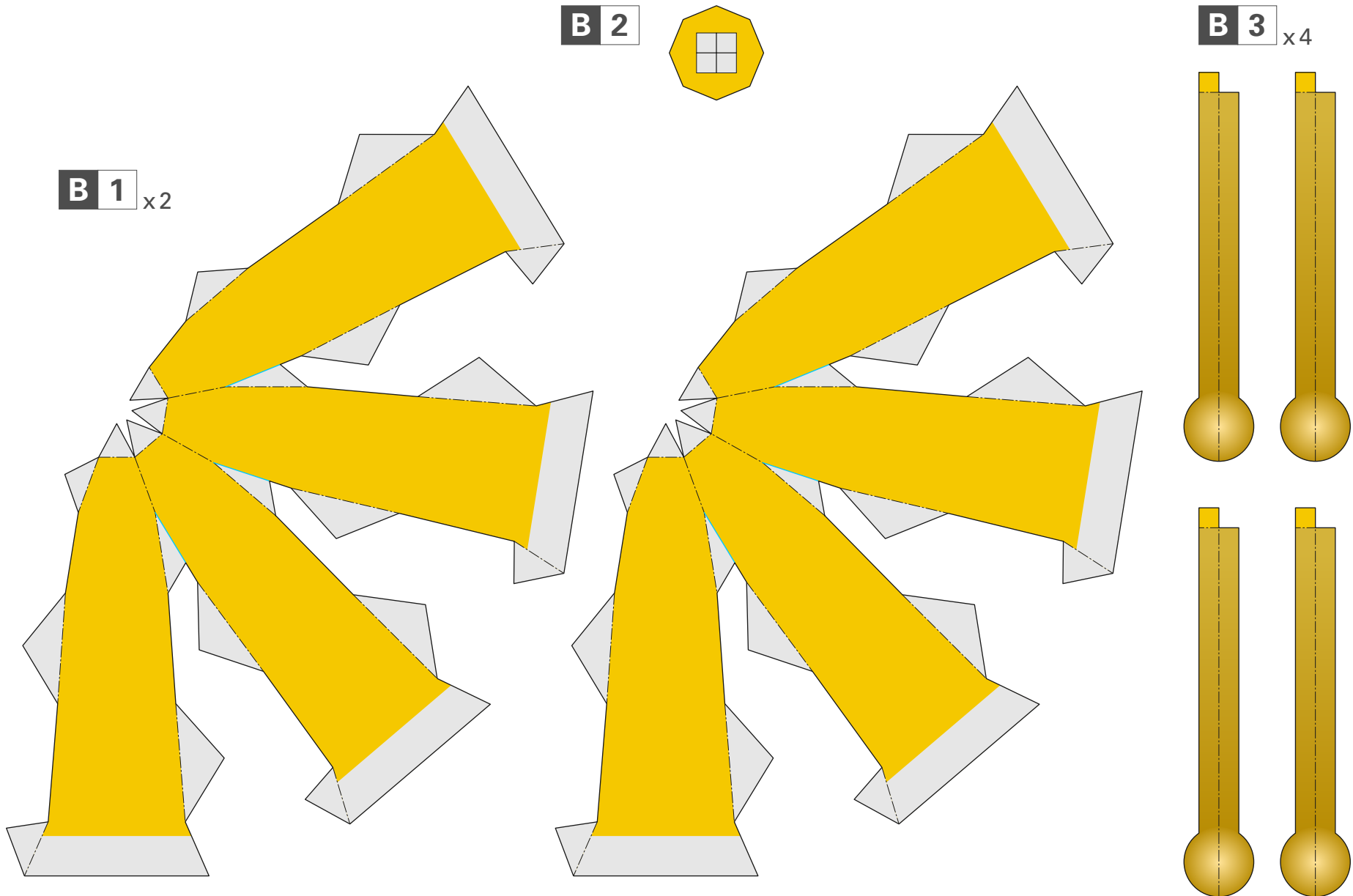


A 1 x2

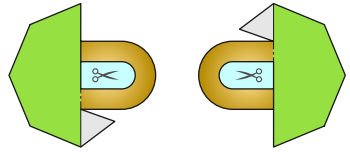
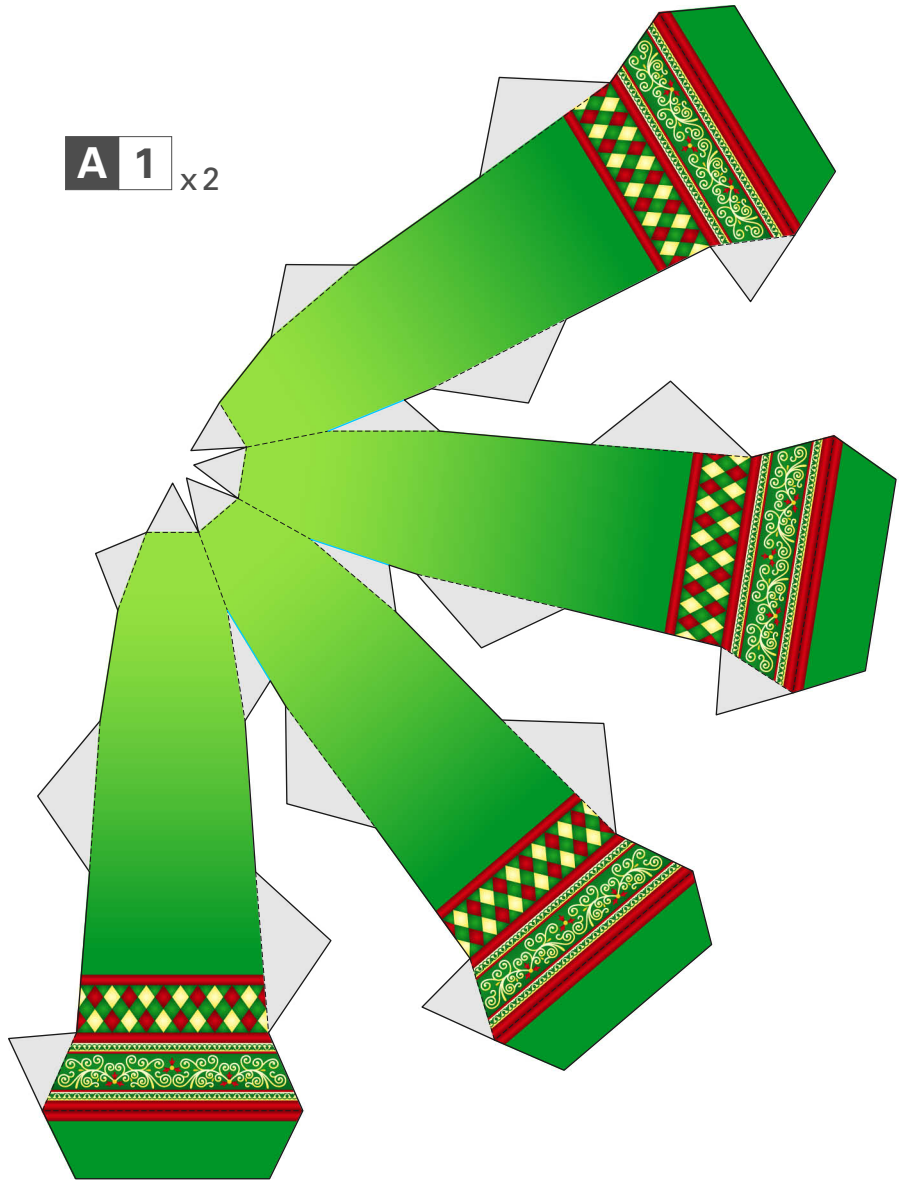


A 2 x2





A 1 x2



A 2 x2

